



# Powers Bluff Enclosed Shelter

Wood County Parks & Forestry

Located at 6990 Bluff Drive

Arpin, WI 54410

Meetings \* Weddings \* Graduations \* Birthdays \* Celebrations \* Memorials



**POPULAR FOR WEDDINGS!**

**Available May 1 —October 31**

**CAPACITY= 200 PEOPLE**

Seats 130 comfortably (10/Table)

M-F, 8 hrs, 8am-4pm or 4pm—Midnight—\$125

Partial day reservations must be made by calling the office.

Weekend or FULL Day, 8am-Midnight—\$150

Holiday Rate: \$175/day

(1) Refrigerator, (13) 8' Picnic tables

Fireplaces at each end

Serving area with multiple outlets

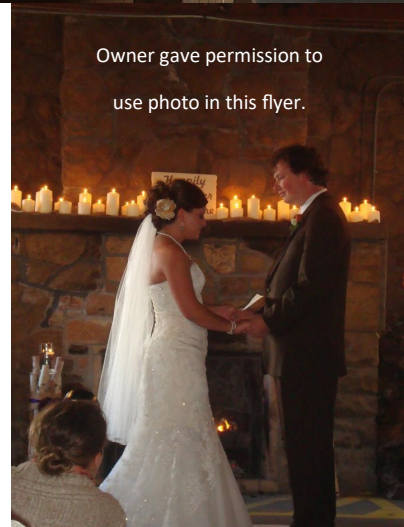
Running water in basement

Vault toilet building

Nature trail & Multi-Use Trail System

Swing Set

Detached, newly re-modeled vault toilet



Owner gave permission to use photo in this flyer.



**MAKE YOUR RESERVATION NOW!**

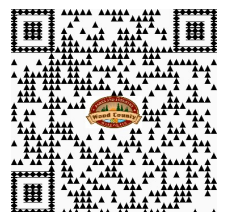
**<https://parksreservations.woodcountywi.gov/parks/>**

**715-421-8422 / [parks@woodcountywi.gov](mailto:parks@woodcountywi.gov)**

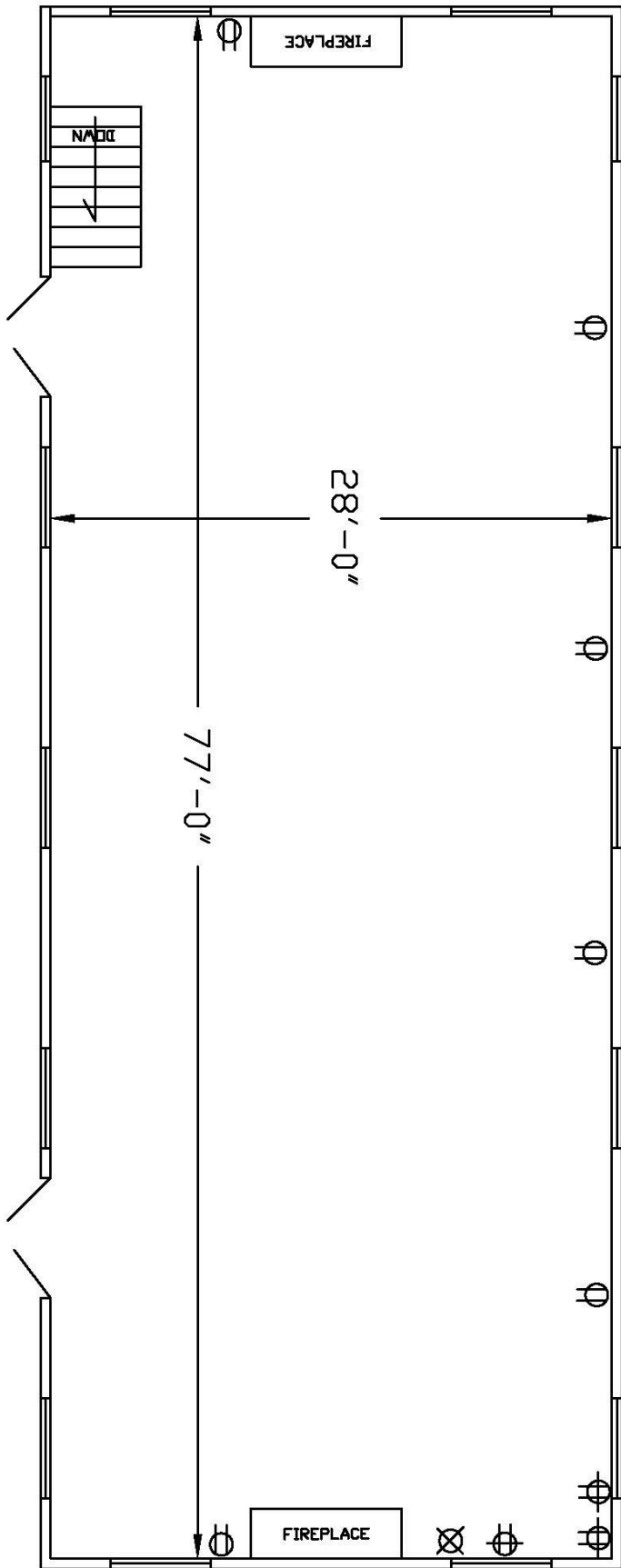
**For more information, see "Shelter Policies & Fees" at**

**<https://www.woodcountywi.gov/Departments/Parks/>**

**or CHECK US OUT ON FACEBOOK!**



# POWERS BLUFF SHELTER



 = DUPLEX RECEP.   
  = QUAD RECEP.   
  = QUAD RECEP.

Scale  
 1/8"=1'  
 8'  
 Note: If above scale doesn't measure 1" in length, then drawing scale is incorrect.

# POWERS BLUFF SHELTER

## Cleaning check list

*Basic cleaning supplies are located in the kitchen which includes broom, wipes and garbage bags.*

	Remove all decorations, tape and confetti from walls, ceilings, tables, windows and eye hooks
	Wipe spills from counters, microwave, refrigerator, and floors
	Sweep floor
	Move all tables back to original positions
	Place garbage and recyclables from inside and outside of shelter in to the appropriate contains in the parking lot. Replace Bags
	Extinguish fire in the grill and fireplaces
	Place charcoal from grill in to the fireplace
	Turn water faucets off
	Take all food and personal items with you
	Close and lock all window and doors including the bathrooms
	Turn off all lights

**\*FAILURE TO COMPLY WITH THE ABOVE WILL SUBJECT THE USER TO BE BILLED FOR THE COST OF LABOR AND/OR REPAIRS**

Please let us know if you have any questions, concerns or comments by sending us an email to [parks@woodcountywi.gov](mailto:parks@woodcountywi.gov).

**Would you like to reserve this shelter again? You may do so up to ONE YEAR in advance.**

**<https://parksreservations.woodcountywi.gov/parks/>**

