



# North Park Enclosed Shelter

## North Wood County Park

Located at 7500 Park Lane  
Arpin, WI 54410

Meetings \* Weddings \* Graduations \* Birthdays \* Celebrations \* Memorials



### POPULAR FOR WEDDINGS!

Available May 1 — October 15

CAPACITY = 250 PEOPLE

Seats 150 comfortably (10/table)

M-F, 8 hours, 8am-4pm or 4pm-Midnight—\$200

*Partial Day reservations must be made by calling the office.*

Weekends or FULL Day-8am-Midnight—\$250

Holiday Rate: \$300/day

1 Refrigerator

(15) 8 ft. picnic tables inside

(4) 8 ft. picnic tables outside

Shelter is 30'x80' w/a 24'x30' addition plus  
an exterior patio 33'x88'

Seating area dimensions (27' x 77') and  
kitchen area (13'wide x 21.5')

Ceiling fans, serving counter & kitchen sink

Wood Fireplace

Large charcoal grill

Attached accessible bathrooms

Close to: Volleyball Court- bring your own  
ball \* 18-hole Disc Golf Course  
Swim Beach & Beach House \* Playground



Find us on:  
**facebook®**

**MAKE YOUR RESERVATION NOW!**

<https://parksreservations.woodcountywi.gov/parks/>

715-421-8422 / [parks@woodcountywi.gov](mailto:parks@woodcountywi.gov)

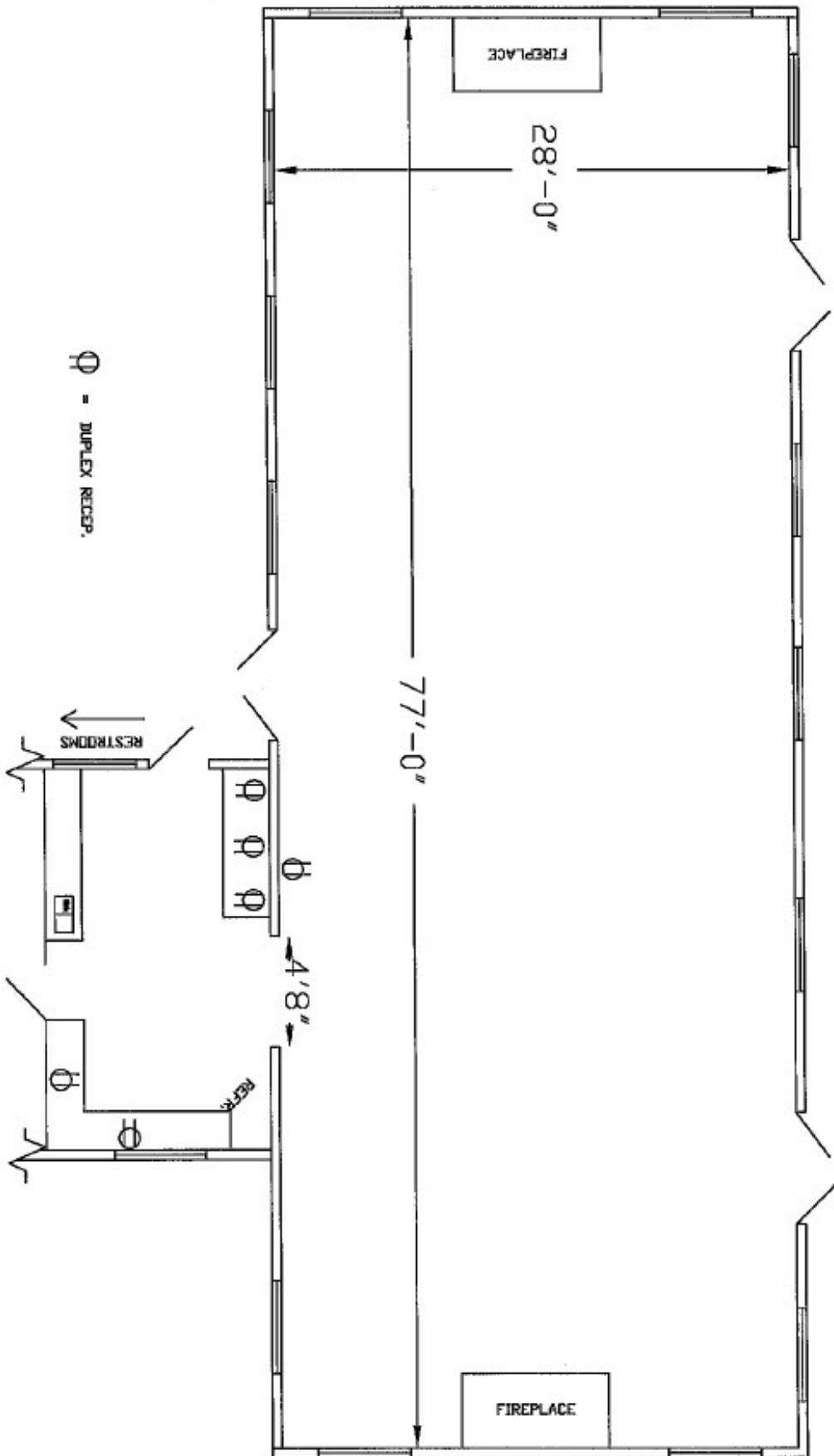
For more information, see "Shelter Policies & Fees" at

<https://www.woodcountywi.gov/Departments/Parks/>

or CHECK US OUT ON FACEBOOK!



# NORTH-PARK SHELTER



Ⓟ - DUPLEX RECEPT.

Scale  
1/8"=1'  
0' 8'

Note: If above scale doesn't measure 1" in length, then drawing scale is incorrect.

# NORTH PARK ENCLOSED SHELTER

## Cleaning check list

*Basic cleaning supplies are located in the kitchen which includes broom, wipes and garbage bags.*

	Remove all decorations, tape and confetti from walls, ceilings, tables, windows and eye hooks
	Wipe spills from counters, microwave, refrigerator, and floors
	Sweep floor
	Replace tables and chairs back to original location
	Place garbage and recyclables from inside and outside of shelter in to the appropriate containers in the parking lot. Replace Bags
	Extinguish fire in the grill and fireplace (Place charcoal from grill in to the fireplace)
	Take all food and personal items with you
	Turn water faucets off
	Close and lock all windows and doors including the bathroom (Return the bathroom key to the Utility Room)
	Turn off lights and lock the door

**\*FAILURE TO COMPLY WITH THE ABOVE WILL SUBJECT THE USER TO BE BILLED FOR THE COST OF LABOR AND/OR REPAIRS**

Please let us know if you have any questions, concerns or comments by sending us an email to [parks@woodcountywi.gov](mailto:parks@woodcountywi.gov).

**Would you like to reserve this shelter again? You may do so up to ONE YEAR in advance.**

**Scan the QR code to be taken directly to the reservation system.**

**<https://parksreservations.woodcountywi.gov/parks/>**

